

# User Manual

## ACP-DANTE-ETV

eARC Audio Output DANTE™ Encoder



1. Read these instructions.
2. Keep these instructions.
3. Reading the instructions should take less time than a Peter Jackson Trilogy.
4. Do not use this apparatus near water.
5. Clean only with a dry cloth.
6. Do not block any ventilation openings.
7. The devices and their accessories should never be exposed to open flames or excessive heat.
8. Only use attachments and accessories specified by the manufacturer.
9. To reduce the risk of electrical shock or damage to the devices and their operators, never handle or touch the devices and power cord with damp or wet hands.
10. Refer all servicing to qualified service personnel. Servicing is required when the apparatus has been damaged in any way, such as power-supply cord or plug is damaged, liquid has been spilled or objects have fallen into the apparatus, the apparatus has been exposed to rain or moisture, does not operate normally, or has been dropped.

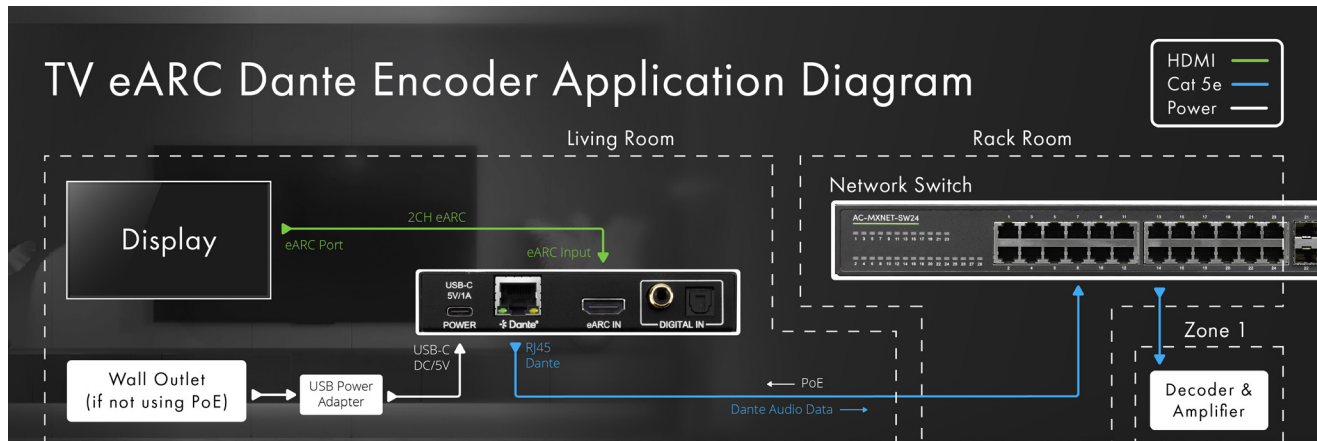
CAUTION: Changes or modifications to this device not expressly approved by AudioControl Inc. could void the user's authority to operate the equipment under FCC rules.



Recycling notice: If the time comes and this apparatus has fulfilled its destiny, do not throw it out into the trash. It has to be carefully recycled for the good of mankind, by a facility specially equipped for the safe recycling of electronic apparatus. Please contact your local or state recycling leaders for assistance in locating a suitable nearby recycling facility. Or, contact us and we might be able to repair it for you.

Important Safety Instructions.....	2
Table of Contents .....	3
Introduction.....	4
Features .....	4
Key Benefits.....	4
Product Overview .....	5
Box Contents .....	5
Technical Specifications .....	5
Front and Rear Panels .....	6
Installation .....	7
Connecting the Devices.....	7
Dante Port Wiring .....	8
Audio Loop Out .....	8
EArc setup.....	9
Digital Audio Inputs .....	9
Digital Audio Inputs .....	9
Device Configuration .....	10
Basic Navigation and Dante Flow Subscription.....	10
Creating multicast Dante Flows .....	11
Changing Device Name and Encoding Configuration.....	11
Network Configuration .....	12
AES67 Audio Stream Configuration.....	12
Service .....	13
Support.....	13
Warranty .....	14
Installation Notes.....	16
Dante Boogie .....	17
Thank you .....	18

The AudioControl ACP-DANTE-ETV is a compact, 2-channel, eARC or Toslink-to-Dante™ platform encoder. It digitally encodes eARC audio signals from TVs' internal apps or OTA for distribution to other devices on a Dante™ network. This unique device is the first of its kind and will allow integrators to deliver audio from the TV throughout the entire system's audio distribution. The diagram below shows the basic application of the ACP-DANTE-ETV encoder and network switch.



## Features

- eARC to Dante™ conversion
- Complete Dante™ system compatibility
- Plug and play support
- Sample rates up to 96kHz
- 16-, 24-, and 32-bit audio support
- Dante™ port LEDs indicate link status and activity
- Unit ships with power supply and USB Type A to Type C cable

## Key Benefits

- Low profile, compact design for placement options
- Auto device discovery on a Dante™ network
- Activity LEDs provide power and Dante™ mute status

# Product Overview



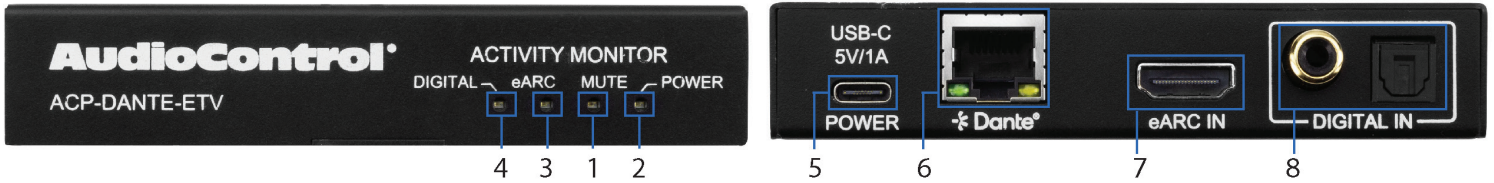
## Box Contents:

- (1x) ACP-DANTE-ETV (Unit)
- (1x) 5V 1A USB Power Adapter
- (1x) European Adapter (not shown)
- (1x) USB-A to USB-C Cable
- (2x) Mounting Brackets
- (4x) Mounting Screws



## Technical Specifications

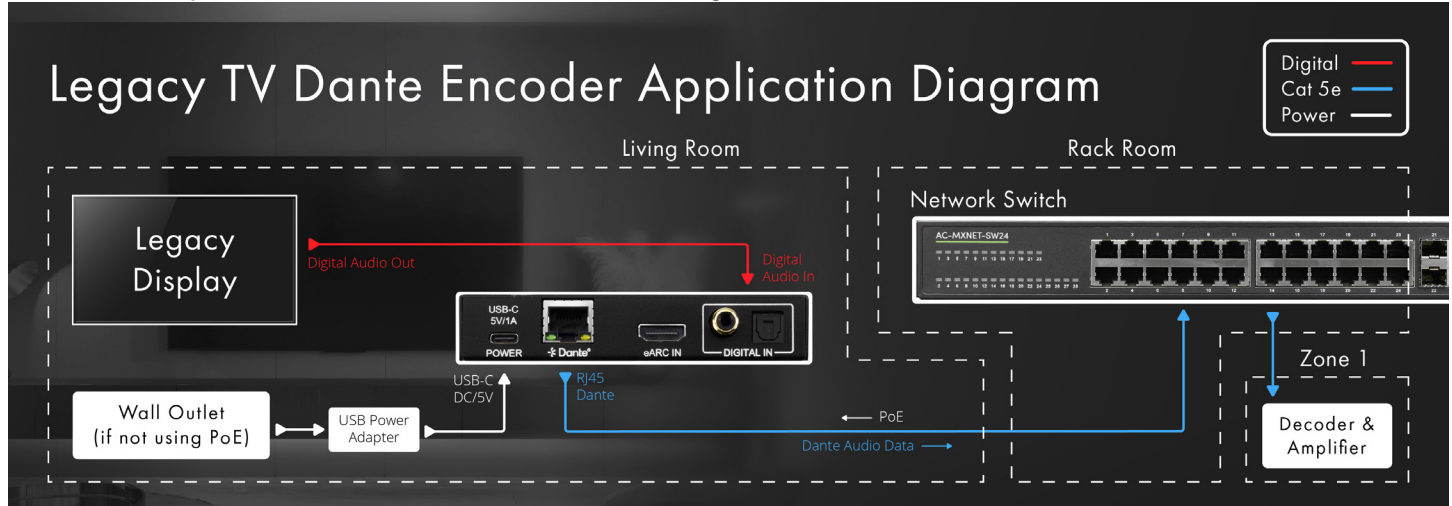
AUDIO	
Frequency Response	20-20kHz
Format	LPCM
Supported Sample Rates	44.1kHz, 48kHz, 88.2kHz, 96kHz
Supported Bit Depths	16, 24, 32
Latency	Configurable 1, 2, 5ms
AUDIO CONNECTIONS	
eARC Input	1x HDMI
Digital Audio Input	1x Toslink
Dante Network Audio	1x RJ-45
POWER	
USB Type-C Power Adapter	Input: 100-240VAC, 50/60Hz, 0.5A Output: 5VDC, 1A
PoE via RJ45	Power over Ethernet
ENVIRONMENTAL	
Operating Temperature	23°F (-5°C) to 125°F (51°C)
Storage Temperature	-4°F (-20°C) to 140°F (60°C)
Humidity Range	5% to 90% RH (no condensation)
DIMENSIONS	
Mounting	Furniture Mount Support
Height x Width x Depth (Single Unit)	Millimeters: 110 x 96 x 25 Inches: 4.33 x 3.78 x 1
Height x Width x Depth (Packaged Unit)	Millimeters: 193 x 136 x 41 Inches: 7.6 x 5.35 x 1.62
Weight (Single Unit)	0.5 lbs (0.23 kg)
Weight (Packaged Unit)	0.85 lbs (0.38 kg)
Product Warranty	5 Years
*Specifications are subject to change without notice. Mass and dimensions are approximate.	



- |          |                               |   |
|----------|-------------------------------|---|
| <b>1</b> | <b>MUTE</b>                   | <ul style="list-style-type: none"> <li>• Red LED status indicator light</li> <li>• Illuminates solid red when Dante™ audio stream is muted</li> </ul>   |
| <hr/>    |                               |   |
| <b>2</b> | <b>POWER</b>                  | <ul style="list-style-type: none"> <li>• Blue LED status indicator light</li> <li>• Illuminates solid blue when power is present on the ACP-DANTE-ETV</li> </ul>  |
| <hr/>    |                               |   |
| <b>3</b> | <b>eARC</b>                   | <ul style="list-style-type: none"> <li>• Blue LED status indicator light</li> <li>• When no audio present LED light is off</li> <li>• When audio present Blue LED light is on</li> </ul>  |
| <hr/>    |                               |   |
| <b>4</b> | <b>DIGITAL</b>                | <ul style="list-style-type: none"> <li>• Blue LED status indicator light</li> <li>• When no audio present LED light is off</li> <li>• When audio present Blue LED light is on</li> </ul>  |
| <hr/>    |                               |   |
| <b>5</b> | <b>DC/5V</b>                  | <ul style="list-style-type: none"> <li>• USB Type C female connector port</li> <li>• Connects to DC 5V 1A power supply with USB-A to USB-C cable</li> </ul>   |
| <hr/>    |                               |   |
| <b>6</b> | <b>DANTE</b>                  | <ul style="list-style-type: none"> <li>• 8-pin RJ-45 female connector port</li> <li>• Encoded Dante™ digital audio output port</li> <li>• Connects to the network switch with CAT5e (or better) cable</li> <li>• If connecting to PoE switch device receives power</li> </ul> |
| <hr/>    |                               |   |
| <b>7</b> | <b>eARC IN</b>                | <ul style="list-style-type: none"> <li>• HDMI Port eARC input</li> <li>• Connects to the audio source device (TV or AV receiver)</li> </ul>   |
| <hr/>    |                               |   |
| <b>8</b> | <b>DIGITAL IN<br/>TOSLINK</b> | <ul style="list-style-type: none"> <li>• Digital Toslink audio input</li> <li>• Digital coax audio input</li> </ul>   |

# Installation

Once the ACP-DANTE-ETV is powered on and connected to the AVPro Edge network switch, it will automatically be discovered on the network using the Dante™ Controller software.

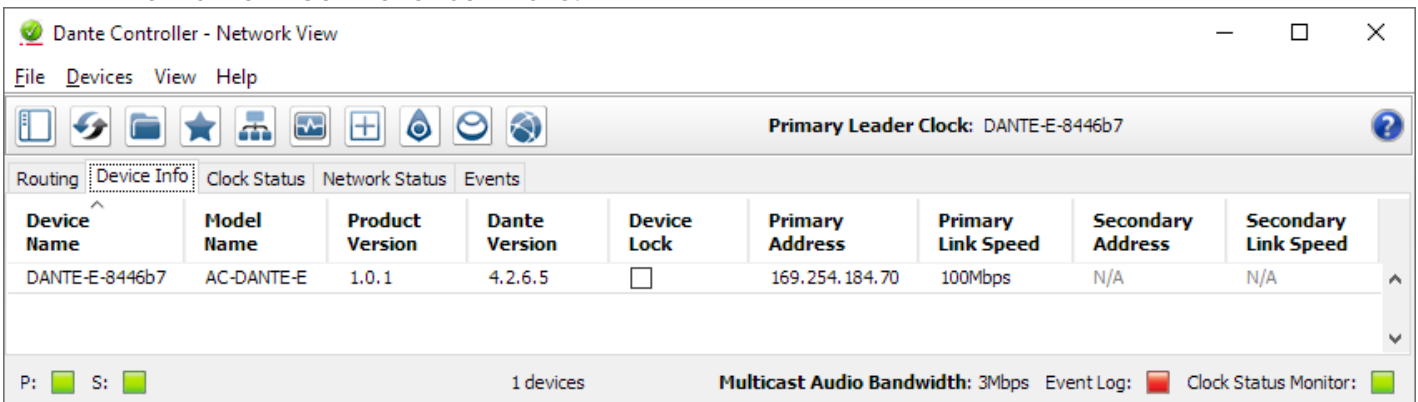


## Connecting the Devices

1. Connect the provided USB-A to USB-C cable between the 5V 1A power supply and the ACP-DANTE-ETV encoder's DC/5V port. Then plug the power supply into a suitable power outlet. Then plug the power supply into a suitable power outlet. Additionally you can use PoE to power this device via network switch. Both the POWER and MUTE LEDs on the front panel will illuminate solid for 6 seconds, after which the MUTE LED will shut off and the POWER LED will stay on, indicating the ACP-DANTE-ETV is powered on.

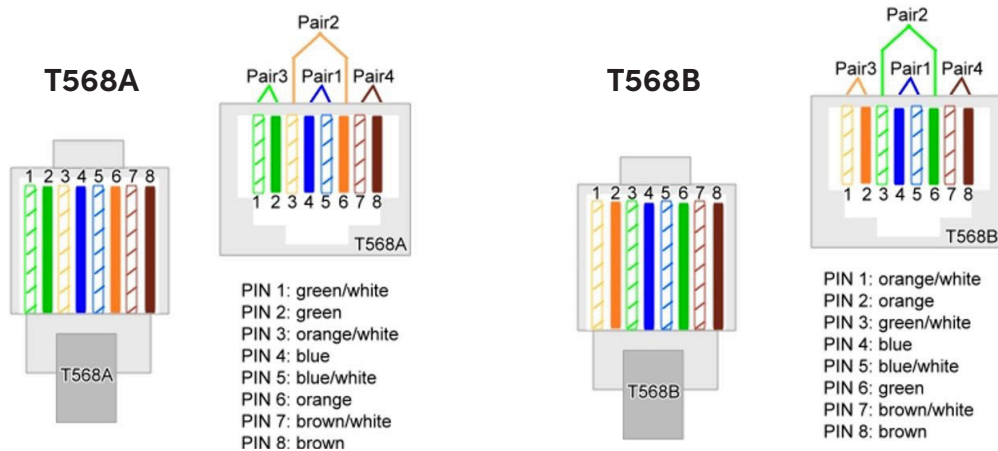
**NOTE:** The ACP-DANTE-ETV does support PoE, but also can be powered locally using the provided 5V 1A power supply and USB-A to USB-C cable.

2. Connect the audio source device to the AUDIO IN port with a HDMI cable via the eARC port. an additional option is using the digital audio input. Ensure the audio source device is powered on.
3. Connect a CAT5e (or better) cable between a computer running the Dante™ Controller software and the network switch.
4. Connect a CAT5e (or better) cable between the DANTE port on the ACP-DANTE-ETV and the network switch. The ACP-DANTE-ETV will be automatically discovered and routed using the Dante™ Controller software.

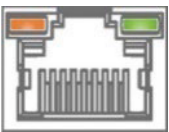


**NOTE:** The computer running Dante™ Controller and the ACP-DANTE-ETV must both have a physical connection to the Dante™ network in order for the ACP-DANTE-ETV to be discovered by Dante™ Controller.

The DANTE audio output port on the encoder utilizes the standard RJ-45 connection. For maximum performance, the recommended cabling is CAT5e (or better) based on TIA/EIA T568A or T568B standards for the wiring of the twisted pair cables.



The DANTE audio output port features two status indicator LEDs to show active connections while troubleshooting.



### Right LED (Amber) – Link Status

Indicates there is data present between the ACP-DANTE-ETV and the receiving end (typically a network switch). Steady blinking amber indicates normal operations.

### Left LED (Green) – Link/Activity

Indicates there is an active link between the ACP-DANTE-ETV and the receiving end. Solid green indicates the ACP-DANTE-ETV and the receiving end device have been identified and are communicating with one another.

If either LED is not illuminating, check the following:

- Ensure the ACP-DANTE-ETV is powered on from the DC/5V port.
- Verify cable length is within the maximum distance of 100 meters (328 feet).
- Connect the ACP-DANTE-ETV directly to the network switch, bypassing all patch panels and punch-down blocks.
- Re-terminate connector ends. Use standard RJ-45 connectors and avoid using push-through or “EZ” type ends as these have exposed copper wiring at the tips that can cause signal interference.
- Contact AudioControl Technical Support if these suggestions do not work.



Ensure the TV is set to output stereo PCM. If TV is left to output bitstream via the eArc output, loud noises will ensue.

## Digital Audio Inputs

There is only 1 digital input, either use the toslink or digital coax input. Only one will work at a time.

- There is a digital priority between the digital coax and toslink input.
- If both inputs are hooked up to a source, the ETV will default to the digital coax input, and only disconnecting the digital coax input will allow the ETV to source audio from the toslink input.

## Digital Audio Inputs

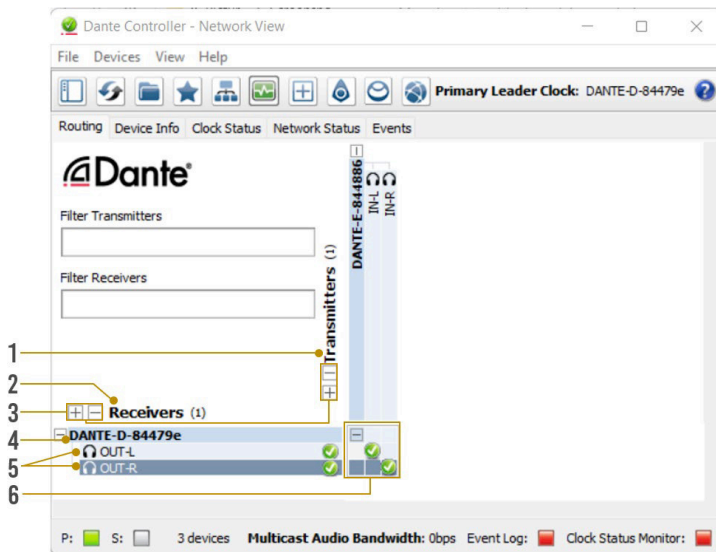
The Digital audio inputs have priority over the eArc input. This allows the user to be able to use a streaming app to start playing audio without having to send source commands to the Dante ETV to switch inputs.

- Out of the box, the ETV defaults to the eARc input. Once an audio source is present on either the toslink or digital coax input, the ETV automatically switches to that input.
- Once the audio source is taken away from that input, after 10 seconds, the ETV will switch back to the eArc input.
- The 10 second delay allows for the ETV to not rapidly switch back and forth between sources if the user pauses the audio for a few seconds, or if there is a pause of audio between songs from the audio source.
- It's good to note, the ETV is designed to detect a digital audio signal from the audio source. So, simply connecting a toslink cable from an audio streaming box to the ETV does not make the ETV switch to the digital audio input.

Configuring the ACP-DANTE-ETV requires installing Audinate’s Dante Controller software on a computer sharing the same network as Dante devices, such as the ACP-DANTE-ETV. Dante Controller is a powerful tool used to configure network settings, signal latency, audio encoding parameters, Dante flow subscriptions, and AES67 audio support. The latest version of Dante Controller can be found here along with additional supplementary instructions that can be obtained via the online help support tool located under the Help tab in the Dante Controller.

## Basic Navigation and Dante Flow Subscription

Dante Controller will open to the routing tab by default where discovered Dante devices are organized according to transmitter or receiver status. Signal routing from Dante encoders (transmitters) to Dante decoders (receivers) can be achieved by clicking the box located at the intersection of the desired transmit and receive channels. Successful subscription is denoted by a green check mark icon.



**TIP**

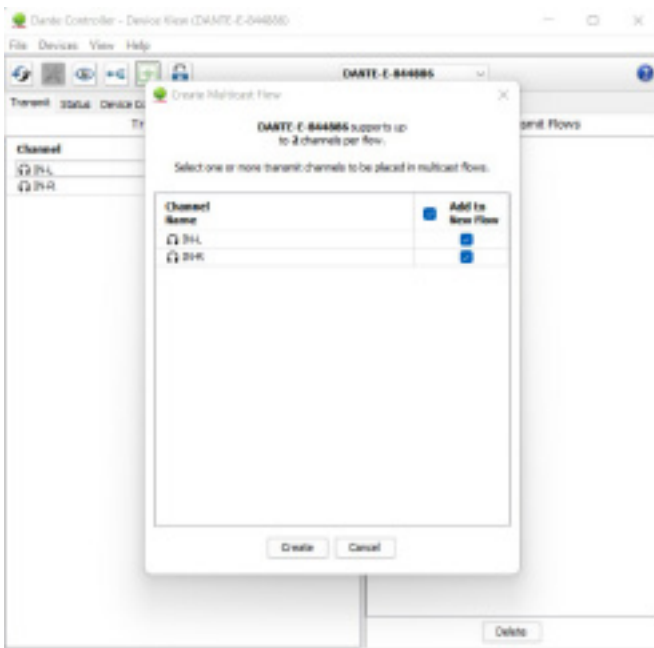
Hovering the mouse over the subscription indicator symbol will provide further details about the subscription and can be useful in troubleshooting

- |   |                            |  |
|---|----------------------------|--|
| 1 | <b>TRANSMITTERS</b>        | <ul style="list-style-type: none"> <li>Discovered Dante encoders</li> </ul>  |
| 2 | <b>RECEIVERS</b>           | <ul style="list-style-type: none"> <li>Discovered Dante decoders</li> </ul>  |
| 3 | <b>+/-</b>                 | <ul style="list-style-type: none"> <li>Select the (+) to expand or (-) to collapse view</li> </ul>   |
| 4 | <b>DEVICE NAME</b>         | <ul style="list-style-type: none"> <li>Displays the name assigned to the Dante device</li> <li>Device name is customizable in Device View</li> <li>Double-click to open Device View</li> </ul>   |
| 5 | <b>CHANNEL NAME</b>        | <ul style="list-style-type: none"> <li>Displays the name of the Dante audio channel</li> <li>Channel name customizable in Device View</li> <li>Double click associated Device Name to open Device View</li> </ul>  |
| 6 | <b>SUBSCRIPTION WINDOW</b> | <ul style="list-style-type: none"> <li>8-pin RJ-45 female connector port</li> <li>Click the box to create a unicast subscription between the overlapping                             <ul style="list-style-type: none"> <li>Subscription in process</li> <li>Subscription successful</li> <li>Subscription error</li> <li>Subscription warning</li> <li>Device part way through setting up a subscription</li> </ul> </li> </ul> |

# Creating Multicast Dante Flows

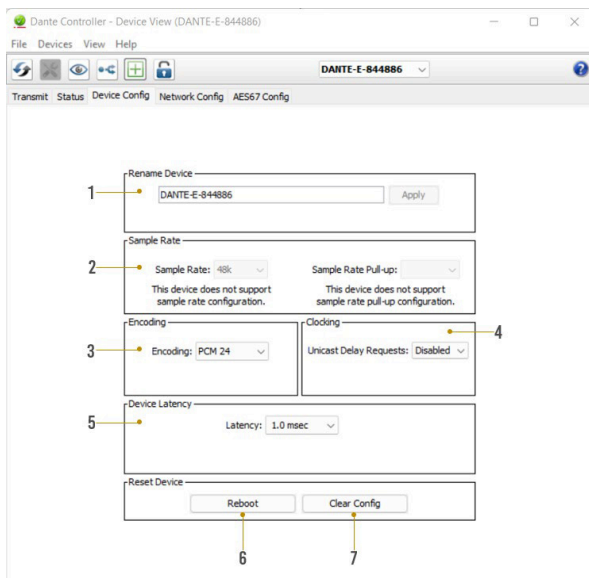
Due to Dante flow limitations, it may be necessary to create multicast flows in order to route audio from the ACP-DANTE-ETV to a higher receive channel count. The ACP-DANTE-ETV can transmit each output channel to 2 receive channels with unicast while both channels can be assigned to 8 devices with multicast.

To configure multicast flows, double-click on the ACP-DANTE-ETV device name to open Device View and click on the flow icon located at the top of the Device View window. A secondary window will pop up where you can select the ACP-DANTE-ETV channels to assign to a multicast flow. Click create to create the multicast flow. Subscriptions of the selected channels will now be assigned to the multicast flow instead of unicast.



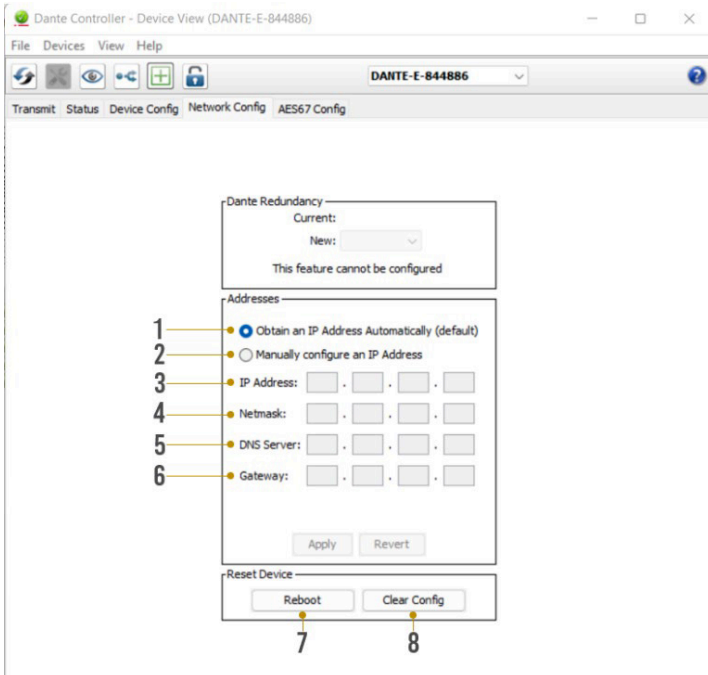
## Changing Device Name and Encoding Configuration

To configure the ACP-DANTE-ETV audio stream, open the Device View by double clicking the Device Name for the ACP-DANTE-ETV and navigate to the Device Config Tab.



- |   |                       |   |
|---|-----------------------|---|
| 1 | <b>DEVICE NAME</b>    | <ul style="list-style-type: none"> <li>Device Name for the ACP-DANTE-ETV</li> <li>Device Name can be changed by typing a new name and clicking apply</li> </ul> |
| 2 | <b>SAMPLE RATE</b>    | <ul style="list-style-type: none"> <li>Set ACP-DANTE-ETV input sample rate</li> <li>44.1, 48, 88.2, 96 kHz sample rates supported</li> </ul>                    |
| 3 | <b>ENCODING</b>       | <ul style="list-style-type: none"> <li>Set the bit depth of the sampled audio input signal</li> <li>16, 24, 32 bit sampling supported</li> </ul>                |
| 4 | <b>CLOCKING</b>       | <ul style="list-style-type: none"> <li>Enable/Disable unicast delay requests</li> </ul>   |
| 5 | <b>DEVICE LATENCY</b> | <ul style="list-style-type: none"> <li>Set latency for subscribed Dante flows</li> <li>1, 2, 5 millisecond latencies supported</li> </ul>                       |
| 6 | <b>REBOOT DEVICE</b>  | <ul style="list-style-type: none"> <li>Reboot the ACP-DANTE-ETV</li> </ul>  |
| 7 | <b>CLEAR CONFIG</b>   | <ul style="list-style-type: none"> <li>Factory Reset Settings</li> </ul>  |

DHCP for the ACP-DANTE-ETV is enabled by default and will automatically be assigned an IP address when connected to the Dante network. Additionally, a static IP address can be assigned by opening the Device View for the ACP-DANTE-ETV and navigating to the Network Config tab.



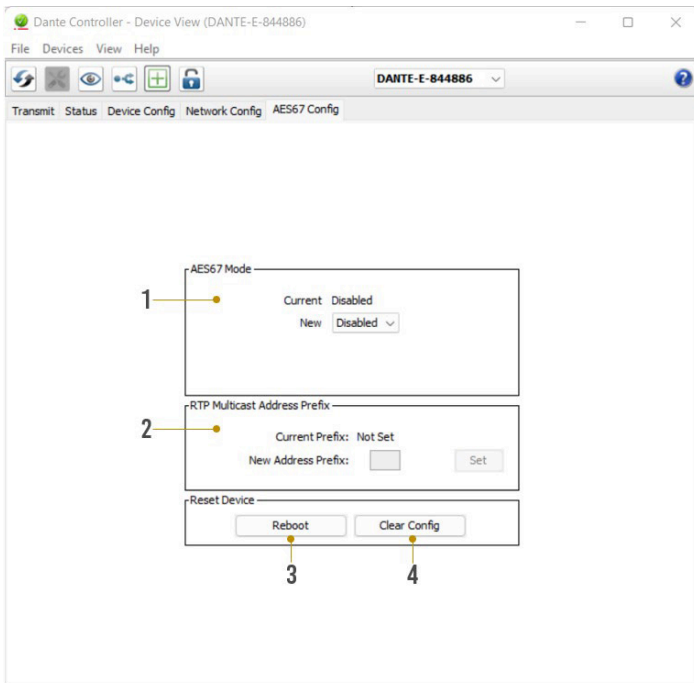
- |   |                                |  |
|---|--------------------------------|--|
| 1 | <b>AUTOMATIC IP ASSIGNMENT</b> | • Check this button to enable DHCP for automatic IP address assignment |
| 2 | <b>MANUAL IP ASSIGNMENT</b>    | • Check this button to enable manual(static) IP addressing             |
| 3 | <b>IP ADDRESS</b>              | • Enter the desired IP address   |
| 4 | <b>SUBNET MASK</b>             | • Enter the desired subnet mask  |
| 5 | <b>DNS SERVER</b>              | • Enter the domain name server   |
| 6 | <b>DEFAULT GATEWAY</b>         | • Enter the default gateway  |
| 7 | <b>REBOOT DEVICE</b>           | • Reboot the ACP-DANTE-ETV   |
| 8 | <b>CLEAR CONFIG</b>            | • Factory reset the ACP-DANTE-ETV                                      |

**WARNING:**

Manually setting the ACP-DANTE-ETV IP address to a different subnet from the Dante Controller computer will result in loss of communication between Dante Controller and the ACP-DANTE-ETV.

## AES67 Audio Stream Configuration

The ACP-DANTE-ETV supports multicast transmission of AES67 encoded audio to compatible non-Dante devices. AES67 multicast transmission can be configured by opening the Device View by double-clicking the ACP-DANTE-ETV Device Name and navigating to the AES67 Config tab.



- |   |                                     |  |
|---|-------------------------------------|--|
| 1 | <b>AES67 MODE</b>                   | • Enable/Disable AES67 multicast flows for compatible non-Dante devices                                |
| 2 | <b>RTP MULTICAST ADDRESS PREFIX</b> | • Displays current RTP multicast prefix<br>• Type in a new RTP multicast prefix and click Set to apply |
| 3 | <b>REBOOT</b>                       | • Reboot the ACP-DANTE-ETV   |
| 4 | <b>CLEAR CONFIG</b>                 | • Factory Reset the ACP-DANTE-ETV  |

### What to do if you need service

If the unit needs service, then please contact AudioControl, either by e-mail or phone. We will verify if there is anything wrong in the system that you can correct yourself, or if it needs to be sent back to our factory.

Please include the following items when returning the unit:

1. A copy of your proof of purchase. No originals please. We cannot guarantee returning them to you.
2. A brief explanation of the trouble you are having with the unit. (You'd be surprised how many people forget this.) If you can supply a really detailed description of the problem, this would be so much better, and our service technicians may add you to their Christmas Card list. Please include any notes about the system and other components you are using. Is it an intermittent problem that only occurs on the first full moon of Spring?
3. A return street address. (No PO Boxes, please).
4. A daytime phone number in case our technicians have a question about the problem you are having, or if they are just feeling lonely.
5. Package the unit in the original packaging if you still have it. Use great care and plenty of good packing materials to protect the unit and prevent it from moving about inside the box. Do not use loose materials like packing peanuts or real peanuts.

You are responsible for the freight charges to us, but we'll pay the return freight back as long as the unit is under warranty. We match whatever shipping method you use to send it to us, so if you return the unit overnight freight, we send it back overnight. We recommend United Parcel Service (UPS) for most shipments.

Please do not return the unit to AudioControl if you have not received an RMA number from our masterful customer support team.

Phone 425-775-8461

[techsupport@audiocontrolpro.com](mailto:techsupport@audiocontrolpro.com)

[support.audiocontrolpro.com](http://support.audiocontrolpro.com)

[www.audiocontrolpro.com/contact-us](http://www.audiocontrolpro.com/contact-us)

In just the same way as being covered in honey and thrown into a dark pit full of hungry woodchucks, people are scared of warranties. Lots of fine print. Months of waiting around. Well, fear no more. This warranty is designed to make you rave about AudioControl. It's a warranty that looks out for you and your client, plus helps you resist the temptation to have your friend Sparky, who's "good with electronics," try to repair your AudioControl product. So go ahead, grab a cup of tea, and carefully read through this warranty.

Our warranty has conditional conditions! "Conditional" doesn't mean anything ominous. The Federal Trade Commission tells all manufacturers to use the term to indicate that certain conditions have to be met before they'll honor the warranty. If you meet all of these conditions, AudioControl will, at its discretion, perform warranty service on any AudioControl products that exhibit defects in materials and/or workmanship during the warranty on your product for five (5) years from the date you bought it, and we will fix or replace it, at our option, during that time.

Here are the conditional conditions:

1. You need to hold on to your sales receipt! All warranty service requires original sales receipt documentation. The warranty only applies to the original purchaser from an authorized AudioControl dealer. Note: Products purchased from unauthorized dealers are not covered under warranty.
2. If an authorized AudioControl dealer installs your AudioControl product, the warranty is five years, otherwise the warranty is limited to one year.
3. Our warranty covers AudioControl products that have been installed according to the instructions in the installation manual.
4. You cannot let anybody who isn't: (A) the AudioControl factory; or (B) somebody authorized in writing by AudioControl service your AudioControl product. If anyone other than (A), or (B) messes with your AudioControl product, the warranty is void.
5. The warranty is void if the serial number is altered, defaced or removed, or if your product has been used improperly. Now that may sound like a big loophole, but here is what we mean by this: Unwarranted abuse is: (A) physical damage (don't use your product to level your dining room table); (B) improper connections (120 volts into the RCA jacks can fry the poor thing); (C) sadistic things! This is the best product we know how to build, but for example if you mount it to the front bumper of your car, drop it over the Niagara Falls or use it for Clay Pigeon shooting practice, something will go wrong.

Assuming you conform to 1 through 5, and it really isn't all that hard to do, we will have you send your product to us for warranty service.

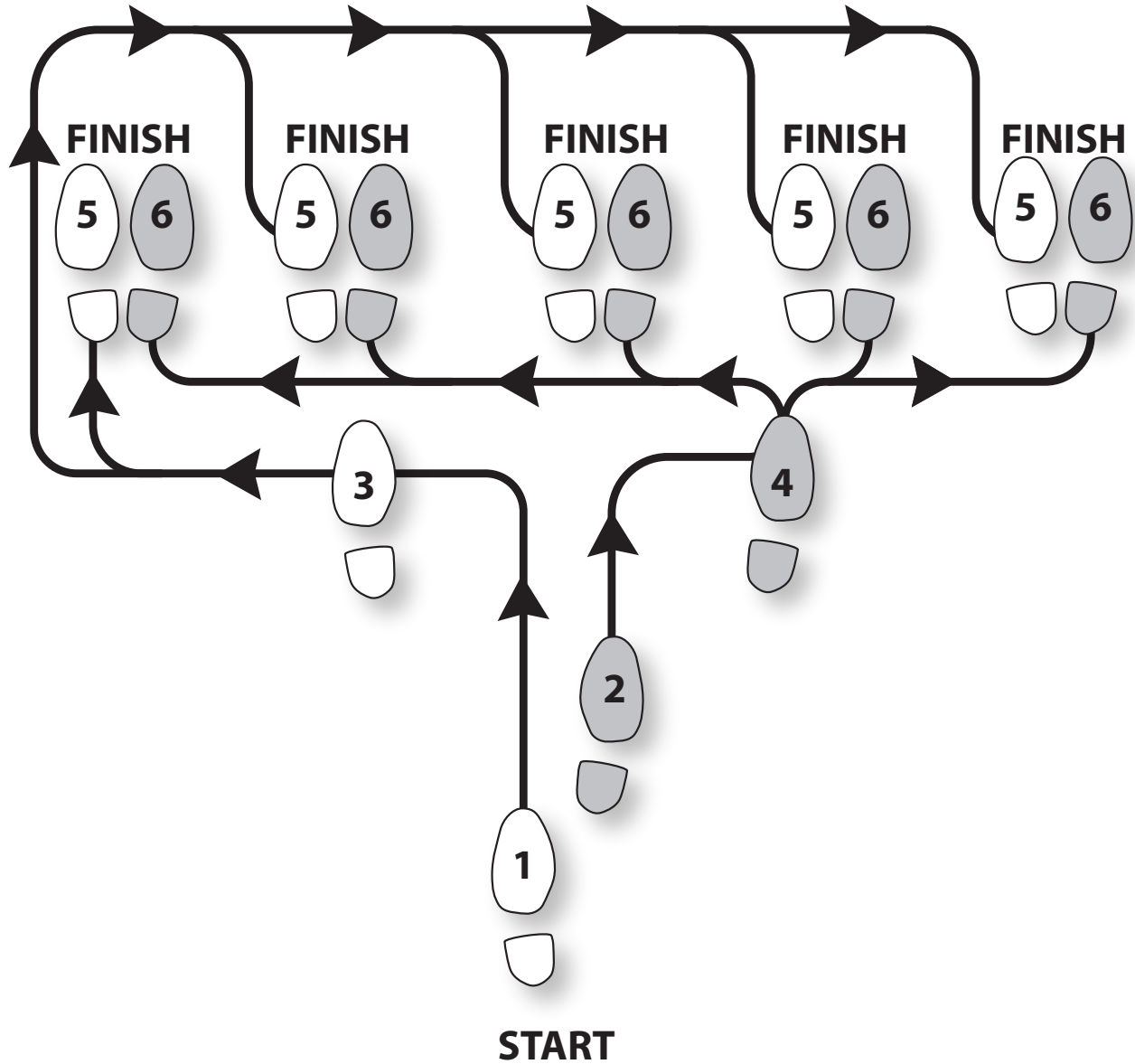
## Legalese Section

This is the only warranty issued by AudioControl. This warranty gives you specific legal rights, and you may also have rights that vary from state to state. Promises of how well your AudioControl product will work are not implied by this warranty. Other than what we've said we'll do in this warranty, we have no obligation, express or implied. We make no warranty of merchantability or fitness for any particular purpose. Also neither we nor anyone else who has been involved in the development or manufacture of the unit will have any liability of any incidental, consequential, special or punitive damages, including but not limited to any lost profits or damage to other parts of your system by hooking up to the unit (whether the claim is one for breach of warranty, negligence of other tort, or any other kind of claim). Some states do not allow limitations of consequential damages.





Hurrah, You are done!



Other common names for this dance:

- Dante Boogie Nights
- Dante 2 Electric Boogaloo
- Dante Inferno

Thank you

**AudioControl®**

Thank you for choosing AudioControl!  
Please contact us with any questions, we are  
happily at your service!



an **AVPro**  company

22410 70th Avenue West ~ Mountlake Terrace, WA 98043

support: 425-775-8461

[techsupport@audiocontrolpro.com](mailto:techsupport@audiocontrolpro.com)